

MONTHLY MEMBERSHIP PROGRESS REPORT

LOCATION ILLINOIS

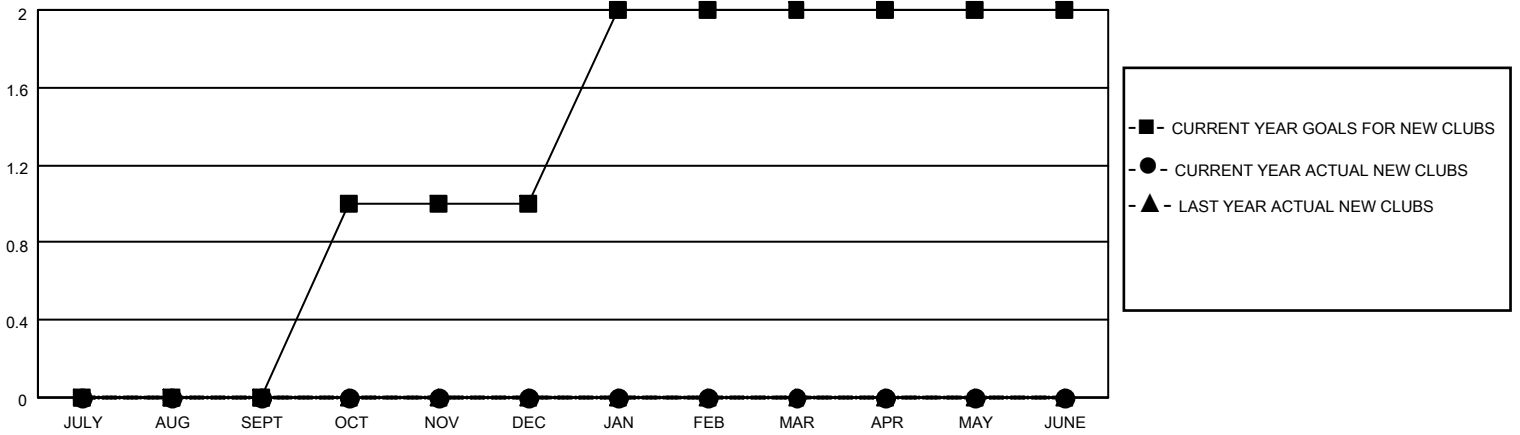
District 1 F

Results as of: 4/30/2023

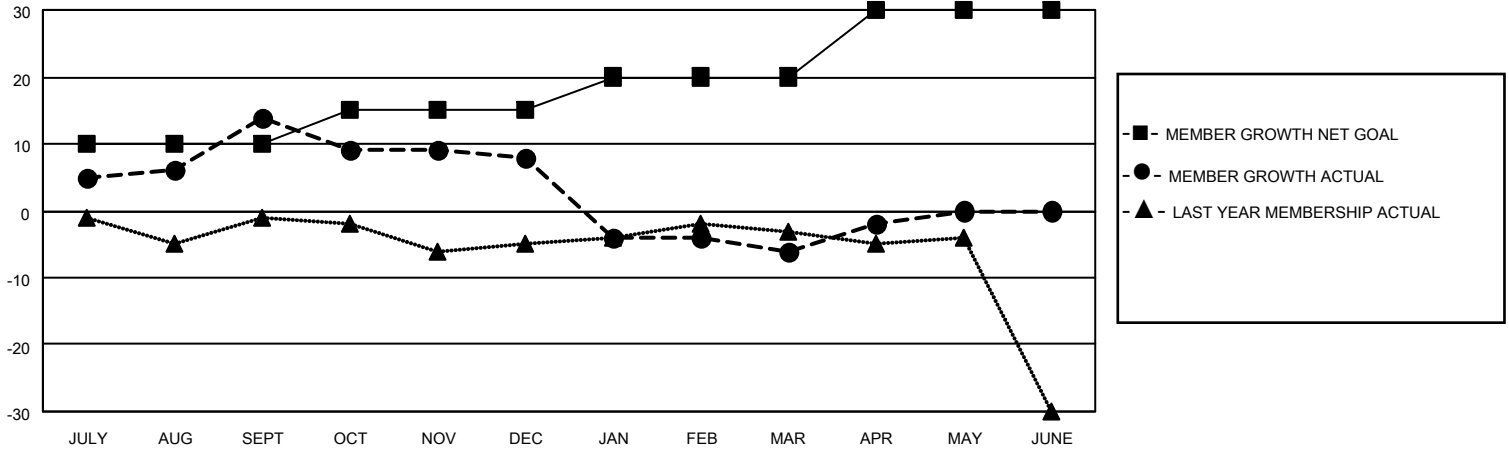
| Clubs | | | |
|-----------------------|---------------|-----------|---------------|
| RESULTS FOR 2022-2023 | | | |
| QUARTER | NEW CLUB GOAL | NEW CLUBS | DROPPED CLUBS |
| JULY/AUG/SEPT | 0 | 0 | 0 |
| OCT/NOV/DEC | 1 | 0 | 1 |
| JAN/FEB/MAR | 1 | 0 | 0 |
| APR/MAY/JUNE | 0 | 0 | 0 |

| Members | | | |
|-----------------------|------------------------|----------------------|---|
| RESULTS FOR 2022-2023 | | | |
| QUARTER | MEMBER GROWTH NET GOAL | MEMBER GROWTH ACTUAL | DROPPED MEMBERS ACTUAL (including transfers) |
| JULY/AUG/SEPT | 10 | 25 | 8 |
| OCT/NOV/DEC | 5 | 26 | 29 |
| JAN/FEB/MAR | 5 | 15 | 26 |
| APR/MAY/JUNE | 10 | 5 | 1 |

GOALS AND ACTUAL NEW CLUBS CUMULATIVE



GOALS AND ACTUAL MEMBERS CUMULATIVE



DROPPED CLUBS: 1

19 CLUBS OF 31 ADDED 1 OR MORE NEW MEMBERS

GENDER DISTRIBUTION

| | |
|----------------------|--------------|
| MALE | 579 (69.51%) |
| FEMALE | 252 (30.25%) |
| NON BINARY | 0 (0.00%) |
| PREFER NOT TO ANSWER | 2 (0.24%) |

DROPPED MEMBERS

| | |
|----------------|-----------|
| DECEASED | 12 |
| CLUB CANCELLED | 7 |
| OTHER | 45 |
| TOTAL | 64 |

[CLICK HERE FOR CUMULATIVE MEMBERSHIP DATA](#)

| | |
|---------------------------------|-----|
| TOTAL FAMILY UNIT MEMBERS | 140 |
| FAMILY MEMBERS PAYING HALF DUES | 72 |